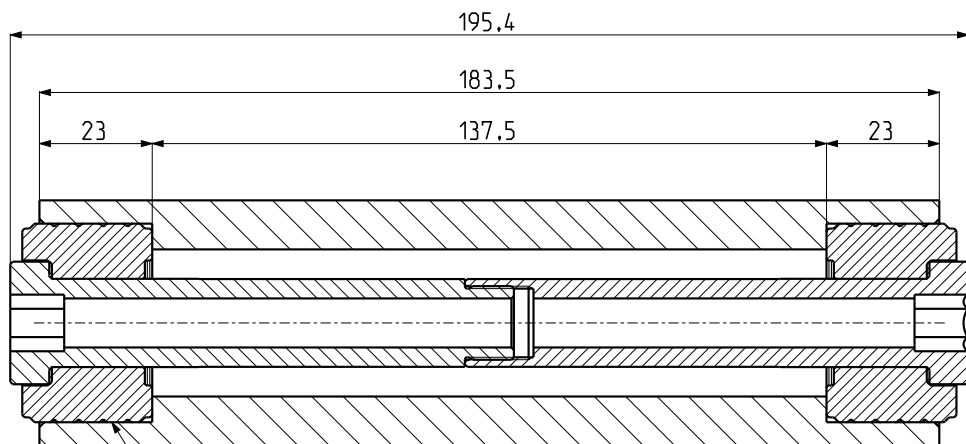
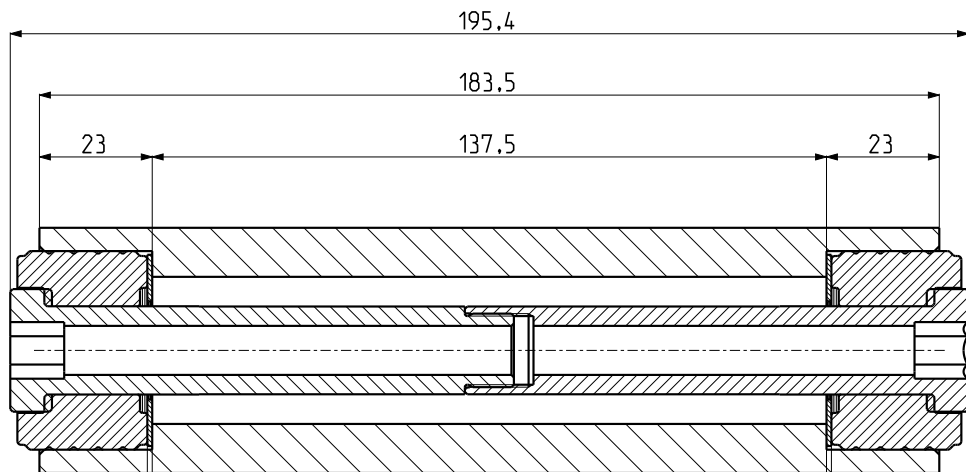


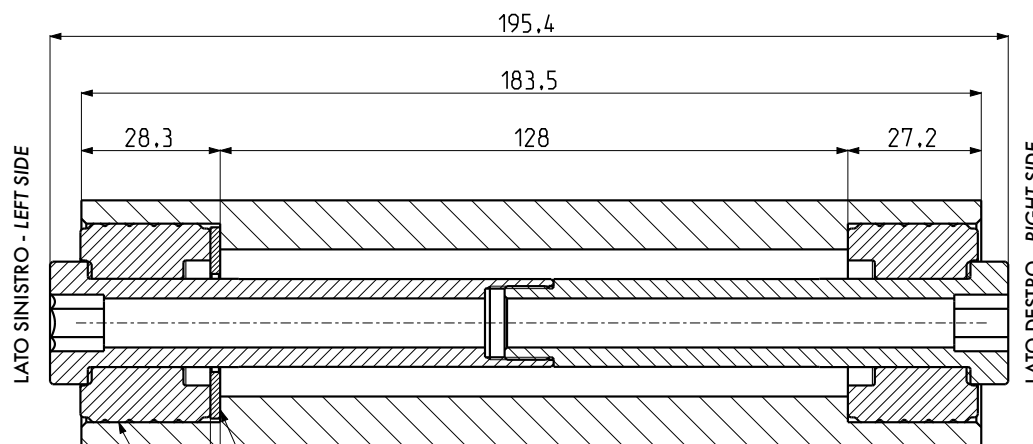
- Seguire lo schema di montaggio a seconda del carter installato - *Follow the assembly diagram based on the crankcase installed.*
- Utilizzare gli spessori presenti nel kit per aumentare il precarico della gomma a seconda delle proprie esigenze.  
*Use the shims provided in the kit to increase the preload of the rubber depending on your needs.*
- Kit ricambio ammortizzatori: 214.0145 per 65 Sh / 214.0144 per 80 Sh
- *Shock absorber replacement kit: 214.0145 for 65 Sh / 214.0144 for 80 Sh*

**CARTER VESPA AFTERMARKET - AFTERMARKET VESPA CRANKCASE**


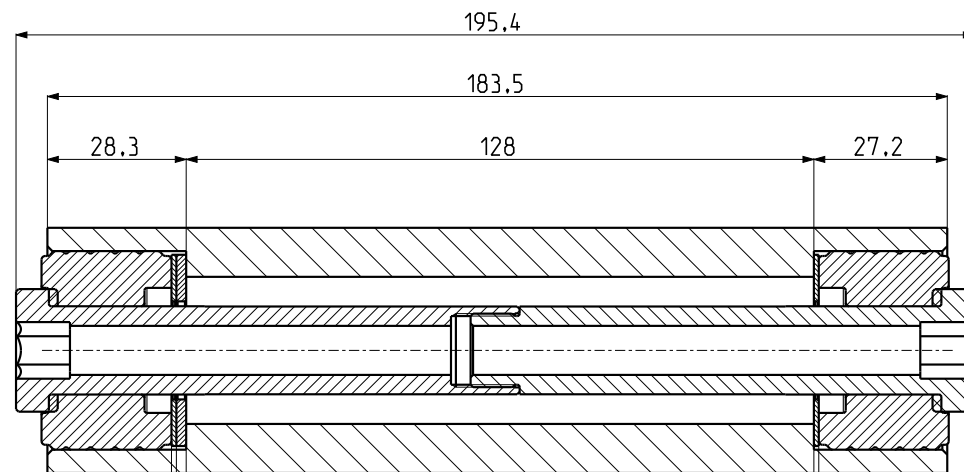
MONTAGGIO STANDARD - AMMORTIZZATORI DUREZZA: 65 Sh per 214.0143  
80 Sh per 214.0142  
STANDARD ASSEMBLY - SHOCK ABSORBERS HARDNESS: 65 Sh for 214.0143  
80 Sh for 214.0142



MONTAGGIO RACING  
PER AUMENTARE DUREZZA AMMORTIZZATORI  
RACING ASSEMBLY  
TO INCREASE THE SHOCK ABSORBERS HARDNESS

**CARTER VESPA 50/125 - PK 50/125 - VESPA 50/125 - PK 50/125 CRANKCASE**


SPESSORE 2 mm - THICKNESS 2 mm  
MONTAGGIO STANDARD - AMMORTIZZATORI DUREZZA: 65 Sh per 214.0143  
80 Sh per 214.0142  
STANDARD ASSEMBLY - SHOCK ABSORBERS HARDNESS: 65 Sh for 214.0143  
80 Sh for 214.0142



MONTAGGIO RACING  
PER AUMENTARE DUREZZA AMMORTIZZATORI  
RACING ASSEMBLY  
TO INCREASE THE SHOCK ABSORBERS HARDNESS